

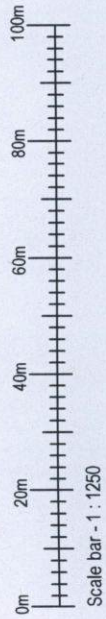
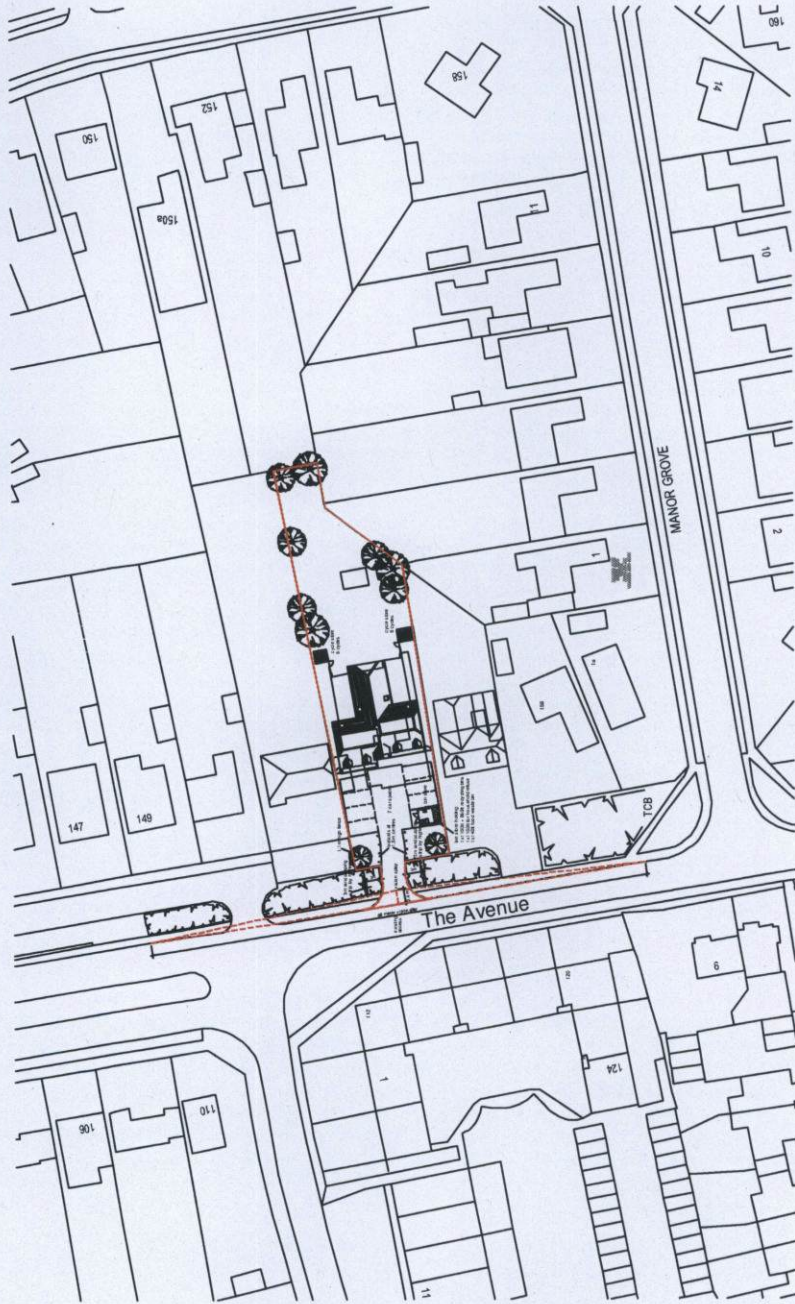
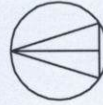
© 2013 Cleford Essex Associates Ltd. All rights reserved.

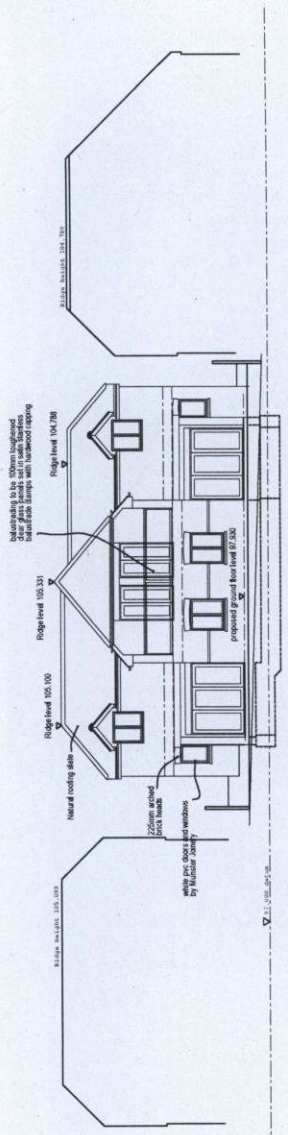
**Cleford Essex Associates**

45 North Bar, Banbury, Oxon, OX1 6JTH.  
Telephone 01295 257556 Fax 01295 268600.

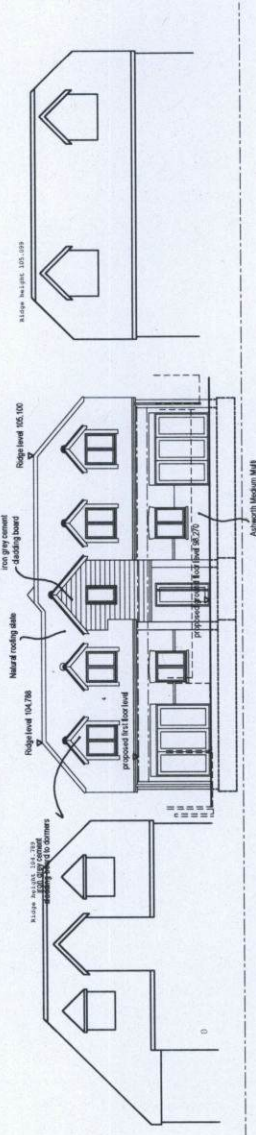
Project	155 The Avenue, Kennington, Oxford OX1 5QZ.
Drawing	Site location Plan
Scale	1 : 100
Date	July 2013
Sheet Size	A1

**DRAWING No.** 1328 - 12

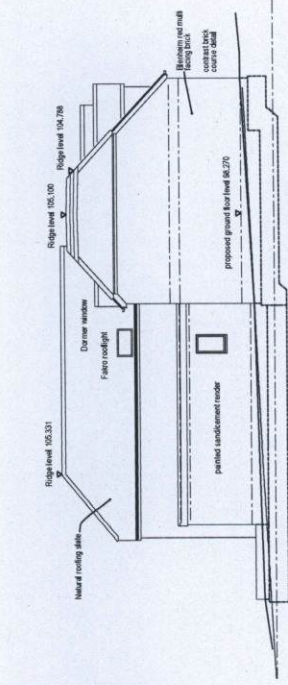




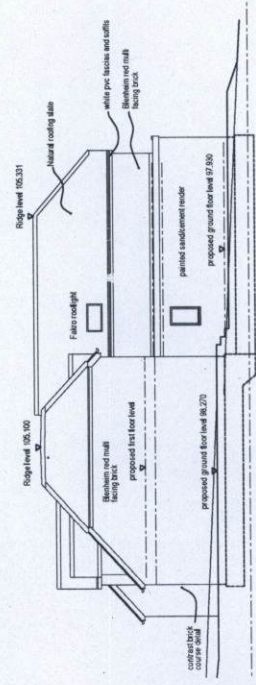
east elevation



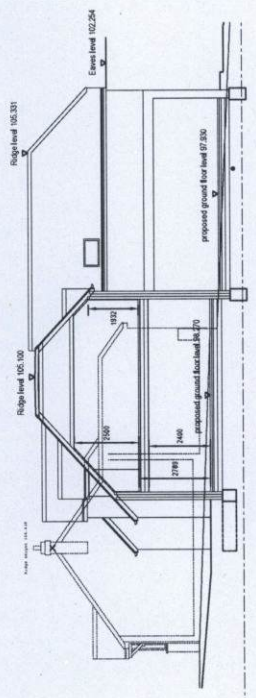
west elevation



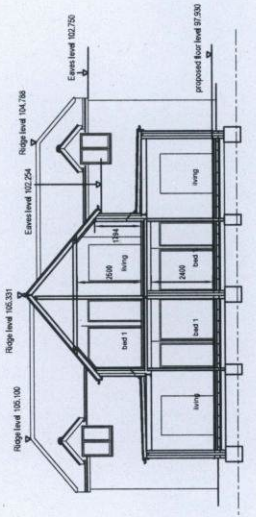
north elevation



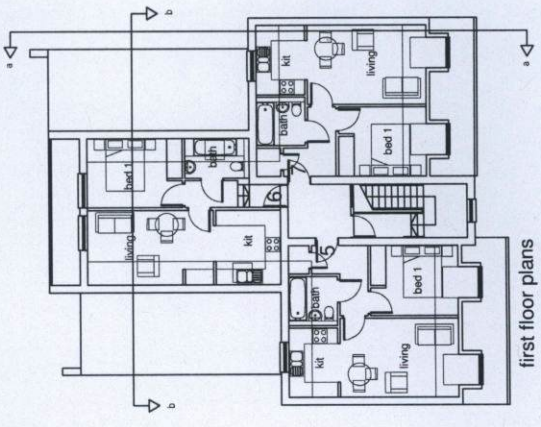
south elevation



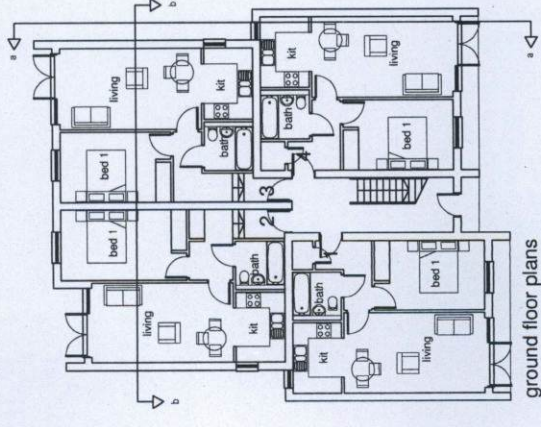
section a : a



section b : b



first floor plans



ground floor plans

Revision 19.07.13 - Heights amended - roof covering revised to all natural slate.  
 © 2013 Cleiford Essex Associates Ltd. All rights reserved.

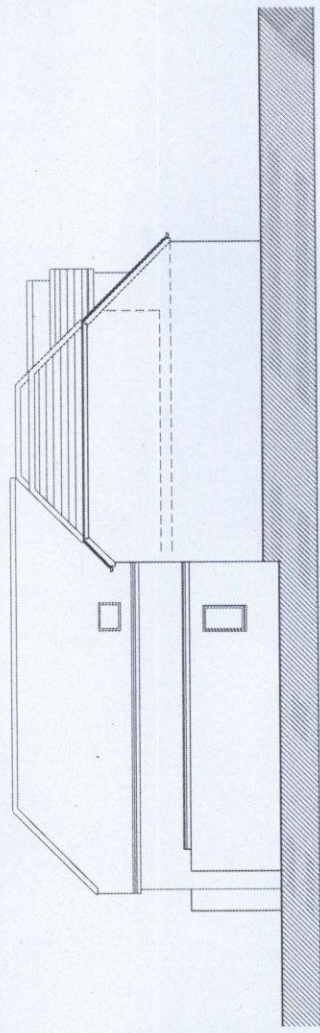
**Cleiford Essex Associates**  
 48 North Bar, Barbary, Oxn, OX16 0TH.  
 Telephone 01295 257567 Fax 01295 286800.

**Project** 155 The Avenue,  
 Kennington, Oxford OX1 5DZ.

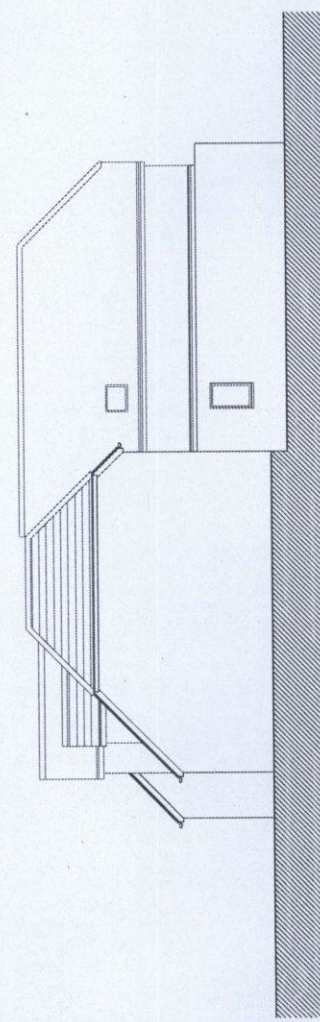
**Drawing** Proposed revisions to approved  
 Planning proposals

**Scale** 1 : 100  
**Date** July 2013  
**Sheet Size** A1

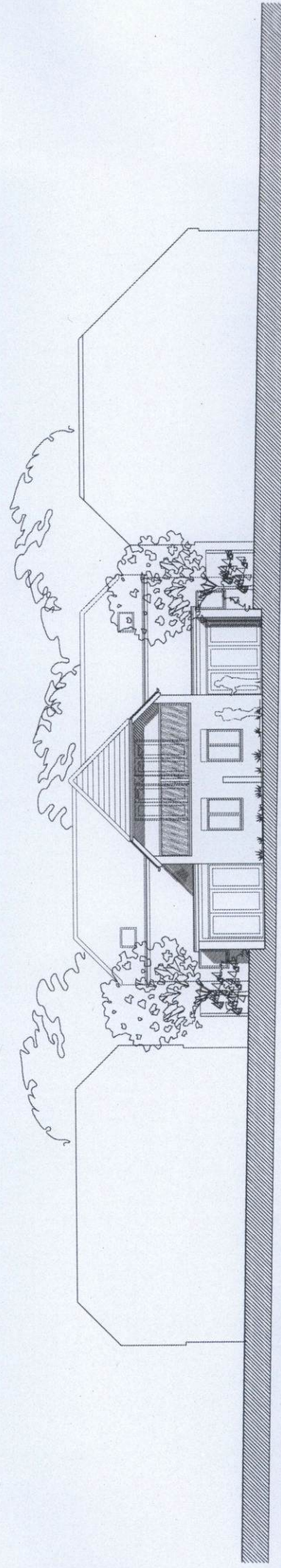
**DRAWING NO.** 1328 - 11a



north elevation

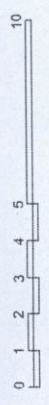


south elevation



157  
east elevation

153



155 the Avenue, Kennington	Nov 2012
	1:100@A2
	2012035
Plans and elevations	P03a

